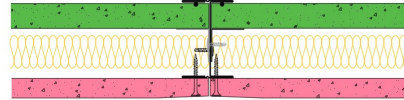


SE60-B-56(25) - SPEEDLINE System Data Sheet - Version V1 (24-10-23)

SPEEDLINE 60mm 'I' Stud Shaft Encasement
 @600mm Ctrs, with BG Gyproc 15mm FireLine,
 BG Gyproc 19mm CoreBoard, 25mm APR



System Performance Breakdown

Fire Resistance:

BS476 Part 22:1987:

Test Ref & Date or Applied Ref & Report:

Max Height:

Thickness:

Duty Grade: BS 5234: Part 2:1992:

Sound Insulation:

60/60 FromShaftSideOnly Minutes (Integrity/Insulation).

BRE 302288 - BRE Report P102396-1012A

Refer to Speedline Specification Clause

77 mm. (At Base Track, Excluding Finishes)

Heavy - Annexes A-F

42 R_wdB, Date Tested or Assessed Against -

TESTED AT ONE OF THE UKAS
 ACCREDITED LABORATORIES
 BELOW

B.T.C
 (H-Ref on Graph)



B.R.E



AIRO



S.R.L

